

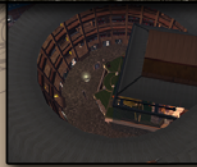
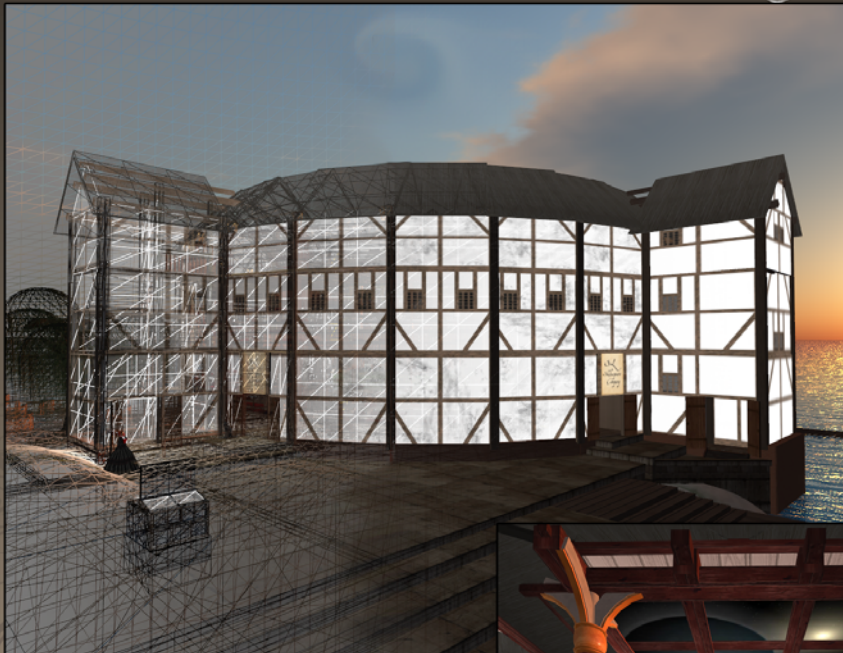
A VIRTUAL RECONSTRUCTION OF THE ORIGINAL GLOBE THEATRE THAT HISTORIANS CONJECTURE STOOD IN SHAKESPEARE'S DAYS, METICULOUSLY ADAPTED AS A *FUNCTIONING THEATRE* IN THE MASSIVELY MULTIUSER VIRTUAL WORLD OF *SECOND LIFE*.

CUSTOM TEXTURES: Digital-algorithm generated wood and "smudge" based on the exterior of the Wanamaker Globe Theatre in London.

RELATIVE-TO-SCALE: Guided by text, dimensions, and diagrams from historical proceedings on the remaking of the Globe, viz., C. Edward Hodges.

ACCURATE REPLICA: Researched by scholars for precision, now known as the most historically accurate 3d rendition of Shakespeare's Globe Theatre on the Internet.

<http://visit.SLshakespeare.com> *Come see it for yourself!*



SL GLOBE THEATRE

HOME OF THE SL SHAKESPEARE COMPANY, A VIRTUAL SHAKESPEARE CONSORTIUM MEMBER